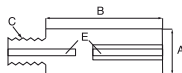


ANODI PER CIRCUITI DI RAFFREDDAMENTO

ANODES FOR ENGINE COOLING SYSTEMS

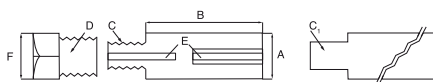


CONDARIA



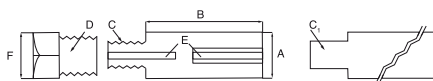
	code	descrizione / description	A \emptyset	B	C	C'	D	E	F	orig. code
	NR226	ANODO / ANODE	29	30	12X1,75 SX					
	NR226C	ANODO / ANODE	29	15	12X1,75 SX					
NEW	NR226FD	ANODO / ANODE FERRO PURO/PURE IRON	29	30	12X1,75 SX					
NEW	NR222FD	ANODO / ANODE FERRO PURO/PURE IRON	29	15	12X1,75 SX					

CUMMINS



	code	descrizione / description	A \emptyset	B	C	C'	D	E	F	orig. code
NEW	NR013	R-15 COMPL. DI TAPPO / WITH PLUG	12	50	3/8 UNC		3/8" GAS CONICO		ESA18	3957921
NEW	NR046	R-15 ANODO / ANODE	12	50	7/16 UNF					68241
	NR014	R-5 ANODO / ANODE	18	65	16MB					
	NR016	R-6 ANODO / ANODE	16	45	3/8 UNC					
	NR016C	R-6C ANODO / ANODE	16	30	3/8 UNC					8517474
	NR017	R-6 COMPL. DI TAPPO / WITH PLUG	16	45	3/8 UNC		1/2" NPT		22	
	NR018	R-12 ANODO / ANODE	10	20	6 MA					
	NR019	R-12 COMPL. DI TAPPO / WITH PLUG	10	20	6 MA		3/8" GAS		22	
	NR020	R-14 ANODO / ANODE	16	50		\emptyset 15,5				
	NR021	R-14 COMPL. DI TAPPO / WITH PLUG	16	50		\emptyset 15,5	1/2" GAS CONICO		22	
NEW	NR020F	R-14F ANODO / ANODE	16	50	7/16 UNF	\emptyset 15,5	1/2" GAS CONICO		22	68241

FORD



	code	descrizione / description	A \emptyset	B	C	C'	D	E	F	orig. code
	NR070	R-24 ANODO / ANODE	10	18		\emptyset 8,5				
	NR071	R-24 COMPL. DI TAPPO / WITH PLUG	10	18		\emptyset 8,5	1/4" GAS CONICO		14	
	NR072	R-24 BIS ANODO / ANODE	13	32		\emptyset 9				